



Berner
Fachhochschule



Evening Lectures: Aggression in Health Care Settings

Innovation for Nursing Practice!
Evening Lectures at the Health Division of the
Bern University of Applied Sciences,
Schwarztorstrasse 48, 3007 Bern, Room 004

Wednesday 18.6.2014
From 16.45 – 19.00

Innovation for Nursing Practice!

Sehr geehrte Damen und Herren, liebe Kolleginnen und Kollegen

Aggressives Verhalten ist in vielen Bereichen des Gesundheitswesens ein wenig beachtetes Thema. Obwohl fast alle Gesundheitsfachpersonen und insbesondere Pflegende im Verlaufe ihrer Berufskarriere Patientenaggression erleben, wird Aggression im Bereich der Sicherheit von Mitarbeitenden oder als Einflussfaktor auf die Versorgungsqualität in den deutschsprachigen Ländern nur wenig diskutiert.

Unsere «Evening Lectures» sollen daher Aggression zum Thema machen. Renommiertere Kolleginnen aus Australien, England und Kanada beleuchten mit uns verschiedene Aspekte der Aggression im Gesundheitswesen und zeigen Umsetzungsmöglichkeiten für die Praxis auf.

Die Veranstaltung wird in englischer Sprache durchgeführt. Die Teilnahme an der Veranstaltung ist kostenlos. Eine Anmeldung ist nicht notwendig. Ein Plan mit den Ortsangaben finden Sie hier: www.gesundheit.bfh.ch/de/campus/standort

Wir freuen uns auf einen angeregten Austausch.

Freundliche Grüsse

S. Hahn

Prof. Dr. Sabine Hahn

Leiterin angewandte Forschung & Entwicklung, Dienstleistung Pflege

Location

Bern University of Applied Sciences, Health Division,
Schwarztorstrasse 48, 3007 Bern, Room 004



Programm

A Model for Clinical Prevention and Intervention Strategies in the Clinical Setting

SABINE HAHN, RN, BScN, MNSc, PhD, Head of Nursing Discipline, Division Head of Applied Research & Development in Nursing, Bern University of Applied Sciences, Health Division. Effective prevention and intervention addressing clinical aggression in a health organisation needs to consider different influencing factors. The presentation will give an insight in the Model of Strategies Addressing Violence in Hospitals – SAVEinH – and how the model can be applied in practice.

Organizational Strategies in Addressing Aggression in a Canadian Mental Health Hospital

SANAZ RIAHI, RN, BScN, MSN, Director, Professional Practice & Clinical Information, Ontario Shores Centre for Mental Health Sciences, Whitby, Ontario

This presentation will review organizational strategies embedded to address patient aggression in a Canadian Mental Health settings. Review of findings from a recent exploration of patient and staff perspectives will be shared and lessons learned and future opportunities will be discussed.

Establishing multi-disciplinary standards for the management of clinical aggression in acute health services in Australia

MARIE GERDTZ, RN A&E Cert BN GDAET PhD, Department of Nursing at The University of Melbourne, Nurse Researcher at Melbourne Health.

This presentation focuses on the outcomes of a project conducted within the state of Victoria, Australia to develop training standards and response procedures for health services in the management of clinical aggression. This is based on an integrated literature review, industry consultation and policy analysis.

How to De-escalate Patient-Staff Conflicts? A Framework for Health Care Settings

DIRK RICHTER, RN, PhD, Nursing Research Professor, Bern University of Applied Sciences, Health Division

For many decades, aggression management in health care settings has mainly relied on physical techniques for defence, containment and restraint. Until today, verbal and non-verbal de-escalation interventions are poorly conceptualized and evaluated. Based on two literature reviews, this presentation proposes a framework for de-escalation techniques and provides an in-depth overview about specific interventions which aim at the organizational level of health care institutions as well as at personal skills of staff.

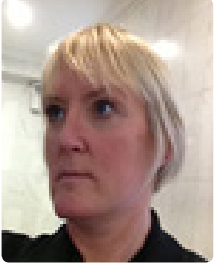
Reducing Restrictive Practices In Health and Social Care Settings in the UK

JOY DUXBURY, PhD, MSA, BSc, RMN, RN School of Health, University of Central Lancashire, UK, Professor of Mental Health Nursing

This presentation outlines the current research and policy in the UK that aims to address and reduce the use of restrictive practices in health and social care settings. Following on from concerns about a lack of compassion in the health and social care industry, a two-year programme of work has been scheduled to address these imbalances.

Speakers

Prof. Dr. Joy Duxbury



Joy is Professor of Mental Health Nursing at the University of Central Lancashire and leads on research into mental health and wellbeing within the School of Health. She has a clinical background in forensic mental health and has conducted extensive research into the role of the patient in the delivery of care. The bulk of her research and publications has been on staff and patient perspectives on aggression and relational experiences in inpatient services. She was funded by the Ministry of Justice to review theories on restraint related deaths in the UK. Joy is Chair of the European Research Group on Violence in Psychiatry and Royal College of Nursing Mental Health

Steering Group and Vice Chair of the Mental Health Nurse Academics UK. She is the founder of the International Research Collaborative on Clinical Aggression and an honorary fellow and associate chair at Melbourne University. She has most recently been involved in writing guidance for the DH on minimising restrictive practices.

✉ E-Mail: j.ducbury@uclan.ac.uk

Associate Prof. Dr. Marie Gerdtz



Marie Gerdtz is Associate Professor of Nursing and Coordinator of The Master of Advanced Practice in Nursing at The University of Melbourne. She holds a joint appointment as Associate Professor of Emergency Nursing at Melbourne Health. Her research program investigates the safety and quality of emergency care environments. To date this research has focused on emergency access, resource allocation, and clinical risk management. She has completed 70 peer reviewed publications in scholarly journals, government reports and book chapters and have obtained research funding from a range of industry sources and nationally competitive schemes.

✉ E-Mail: Marie.Gerdtz@mh.org.au

Prof. Dr. Sabine Hahn



In her current position, she leads research projects in the fields of psychosocial health promotion & prevention, mental health, aggression in health systems and quality of nursing care. She is a member of the editorial board of the PSYCH.PFLEGE HEUTE and editor of the Journal für Qualitative Forschung in Pflege- und Gesundheitswissenschaft. She is Co-president of the Academic Association of Swiss Mental Health Nurses and board member of the European Research Group on Violence in Psychiatry. As delegate of the Swiss Nursing Association she represents the topics Violence and Mental Health Nursing at International Council of Nursing.

✉ E-Mail: sabine.hahn@bfh.ch

Sanaz Riahi



In her current role, she works collaboratively with internal and external stakeholders, with the utilization of technology and health systems, to support, promote and advance quality interprofessional practice environment and to optimize outcomes for patients, staff and the organization. Key activities include leadership for recovery-oriented initiatives such as restraint and seclusion prevention, Recovery Rounds, trauma-informed care, and the development of Ontario Shores' Therapeutic Relationship Model. She is an Adjunct Professor in the Faculty of Health Sciences at the University of Ontario Institute of Technology. Her current research involvement and interests are in clinical aggression, restraint prevention and nursing sensitive outcomes.

✉ E-Mail: riahis@ontarioshores.ca

Prof. Dr. Dirk Richter



Dirk Richter is Nursing Research Professor at Bern University of Applied Sciences, Health Division. Trained as a nurse and sociologist, he has conducted several studies in the fields of psychiatric nursing, aggression management, epidemiology and architecture/design in health care settings. Having published several books and more than hundred (research) papers and book chapters, he is currently board member of the Research Committee on Mental Health, International Sociological Association, member of the expert panel of Horatio European Psychiatric Nurses and serves on several editorial and review boards of scientific journals and conferences.

✉ E-Mail: dirk.richter@bfh.ch

Berner Fachhochschule

Fachbereich Gesundheit

Angewandte Forschung und Entwicklung, Dienstleistung

Murtenstrasse 10

CH-3008 Bern

Telefon +41 31 848 37 60

forschung.gesundheit@bfh.ch

gesundheit.bfh.ch/de/forschung